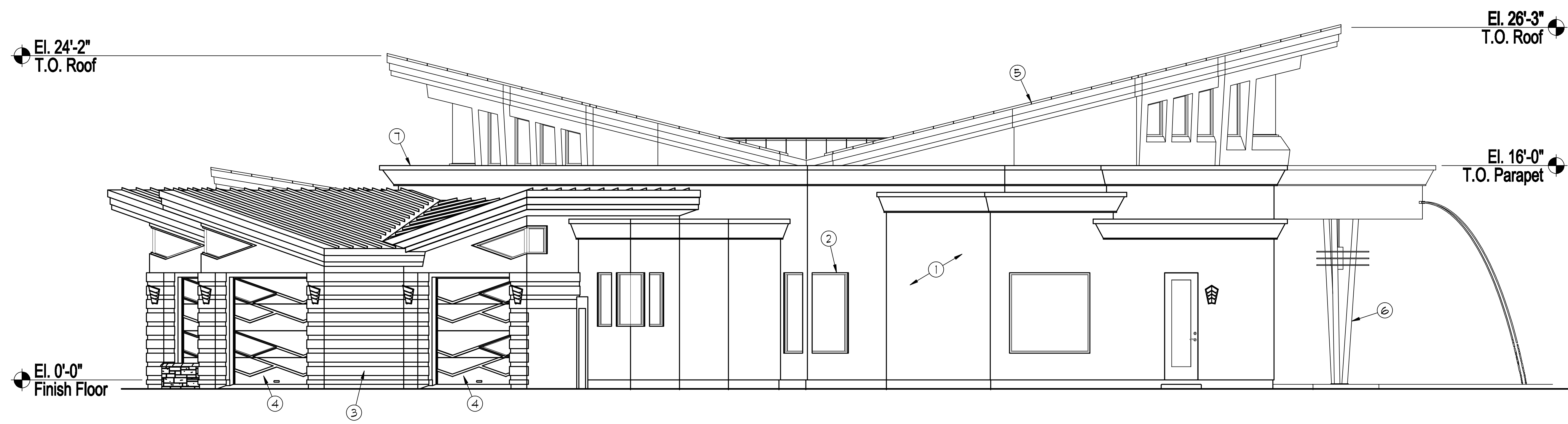


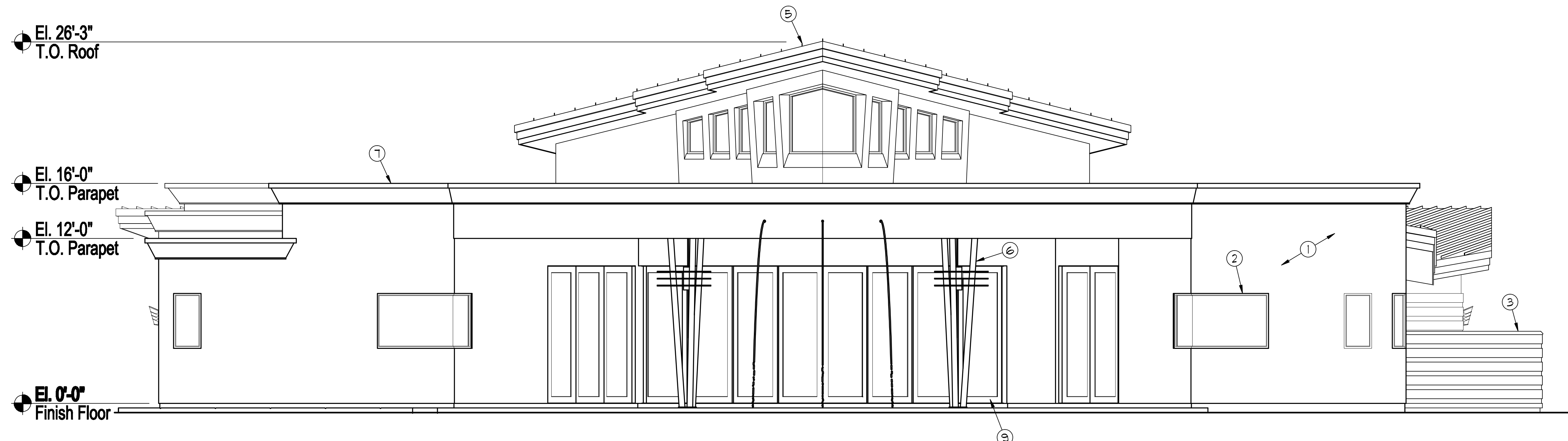
08-14-09

KEYNOTES

- 1 STUCCO SYSTEM ON FRAME: WESTERN ONE-KOTE STUCCO ESR-1601 OR APPROVED EQUAL ON LATH WITH 1" FOAM INSULATION OVER 2- LAYERS OF GRADE 'D' BUILDING PAPER OVER 2x6 FRAME WALL • 16" O/C WITH R-19 BATT INSULATION
- 2 ANODIZED ALUMINUM WINDOWS WITH LOW-E TINTED GLASS, TYP. - SEE PLANS FOR SIZES
- 3 MASTIC APPLIED STONE VENEER OVER STUCCO
- 4 OVERHEAD GARAGE DOOR - TRANSLUCENT NON-REFLECTIVE GLASS LITES w/ ANODIZED ALUMINUM FRAME
- 5 STANDING BEAM METAL ROOF-COPPER COLOR
- 6 STEEL COLUMN w/DECORATIVE LIGHT FIXTURE
- 7 FOAM PARAPET CROWN
- 8 TEMPERED TRANSLUCENT GLASS/STEEL GATE MINIMUM 5'-0" HIGH
- 9 TEMPERED GLASS SLIDING DOORS



Right (West) Elevation



Rear (South) Elevation

REVISIONS	DATE

NICK TSONTAKIS AIA  
ARCHITECTURE & INTERIORS  
  
13825 N. NORTHSIGHT BLVD. SUITE 101 SCOTTSDALE AZ 85260 3600  
TELEPHONE (480) 874-2288 FAX (480) 874-2299

SEAL

CLIENT  
SHENANDOAH HOMES

PROJECT  
STREET OF DREAMS  
LOT 38 @ WHITEWING  
GERMANN ESTATES - CHANDLER, AZ

DRAWING TITLE  
PROPOSED ELEVATIONS

CONCEIVED BY N.T.	DRAWN BY N.T.
APPROVED BY N.T.	PROJECT NUMBER 08-214
SCALE 1/4" = 1'-0"	DRAWING NUMBER
DATE JULY 2009	